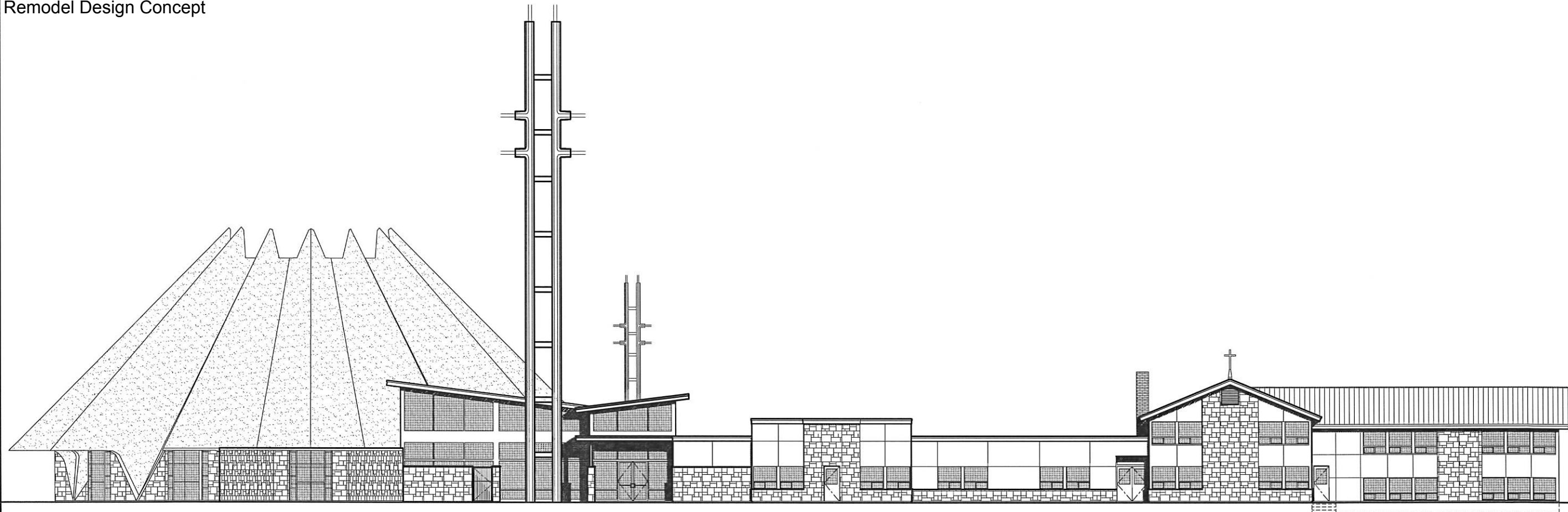


Remodel Design Concept

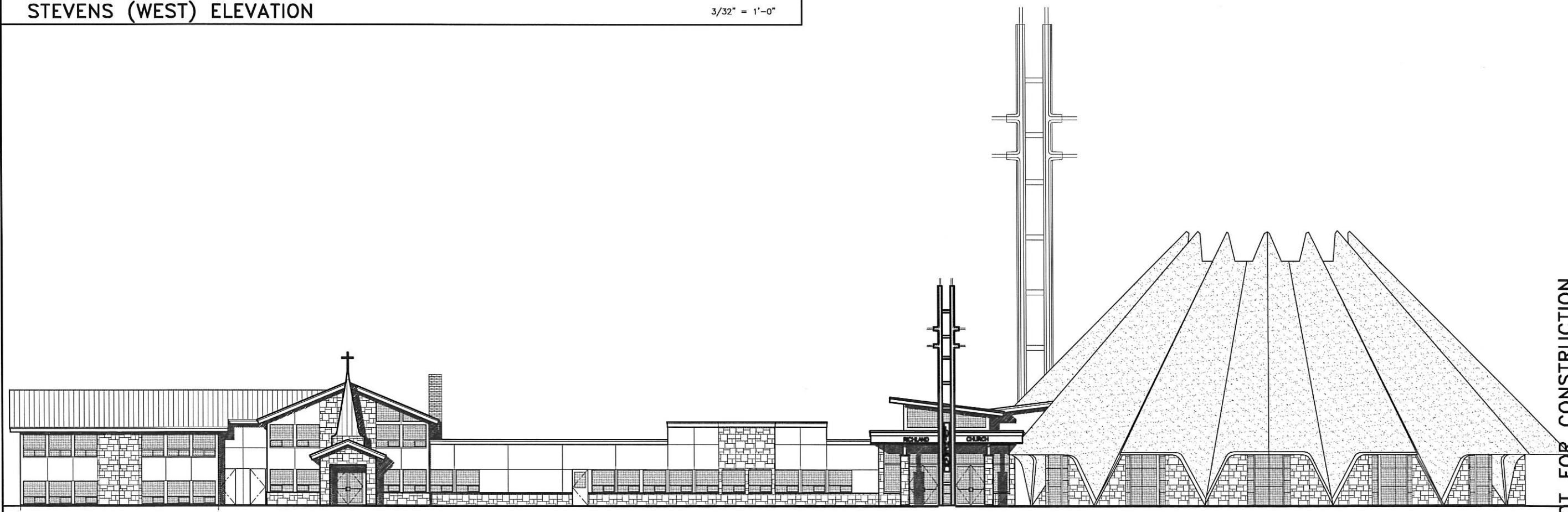


8697 Gage Boulevard
 Kennewick, WA 99336
 P: 509.735.1589
 F: 509.783.5075
 www.meierinc.com



STEVENS (WEST) ELEVATION

3/32" = 1'-0"



EAST (KIMBALL) ELEVATION

3/32" = 1'-0"

NO.	REVISIONS	DATE	DRWN	CHKD	DESIGN	APPD

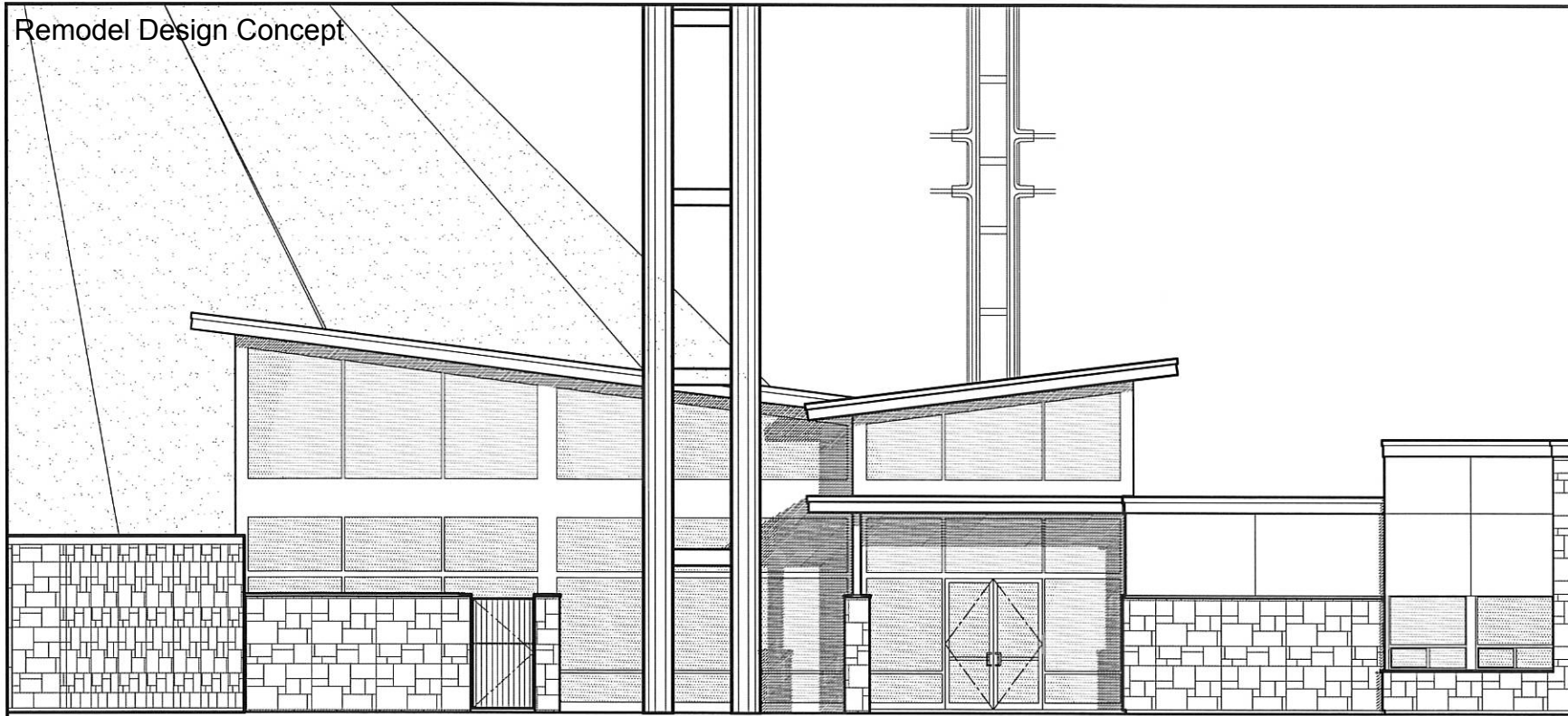
APPROVAL	
DRAWN	
DESIGN	
CHECKED	
APPROVED	

NOT FOR CONSTRUCTION
 RICHLAND LUTHERN CHURCH
FACILITIES STRATEGIC PLAN
 RICHLAND, WA
EAST & WEST ELEVATIONS

DWG. No.
A201
 SCALE:
 CADFILE:
 JOB No. 7448
 REV.

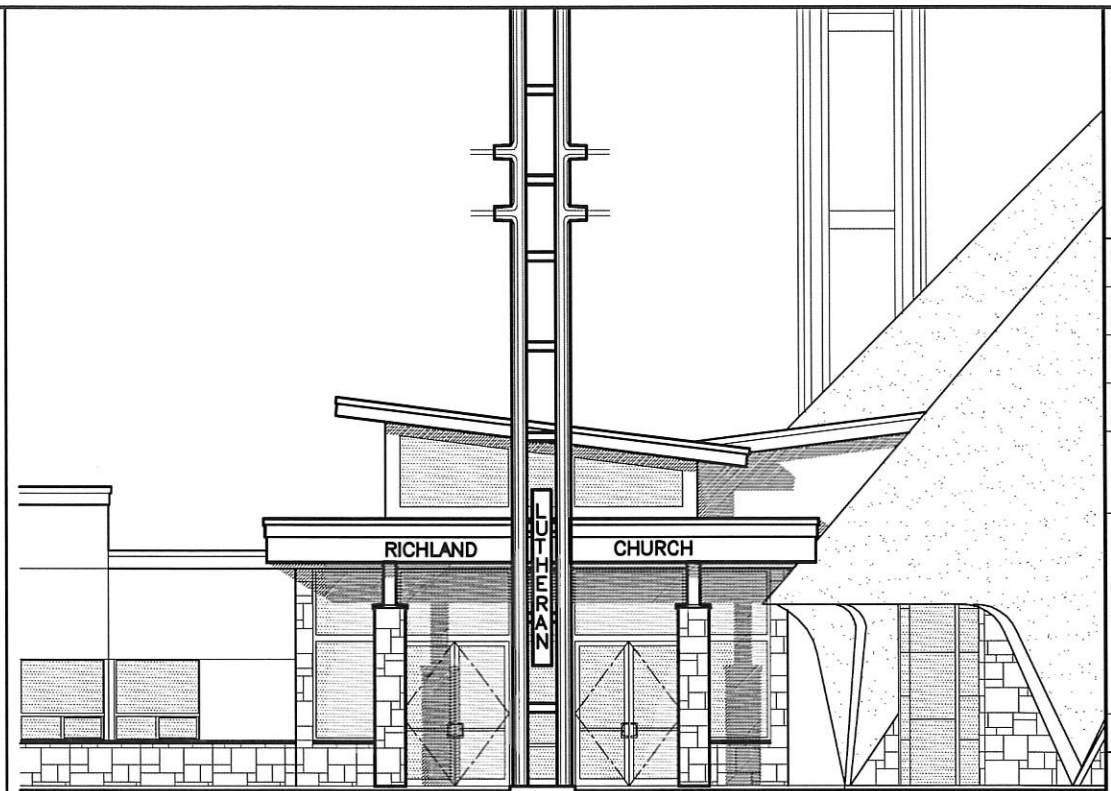
I:\PROJECTS\74007448 RLC Facilities Strategic Plan\DWG\744800X\A01-ed.dwg - Apr 20, 2016 11:01:46 am - Ed Luebben

Remodel Design Concept



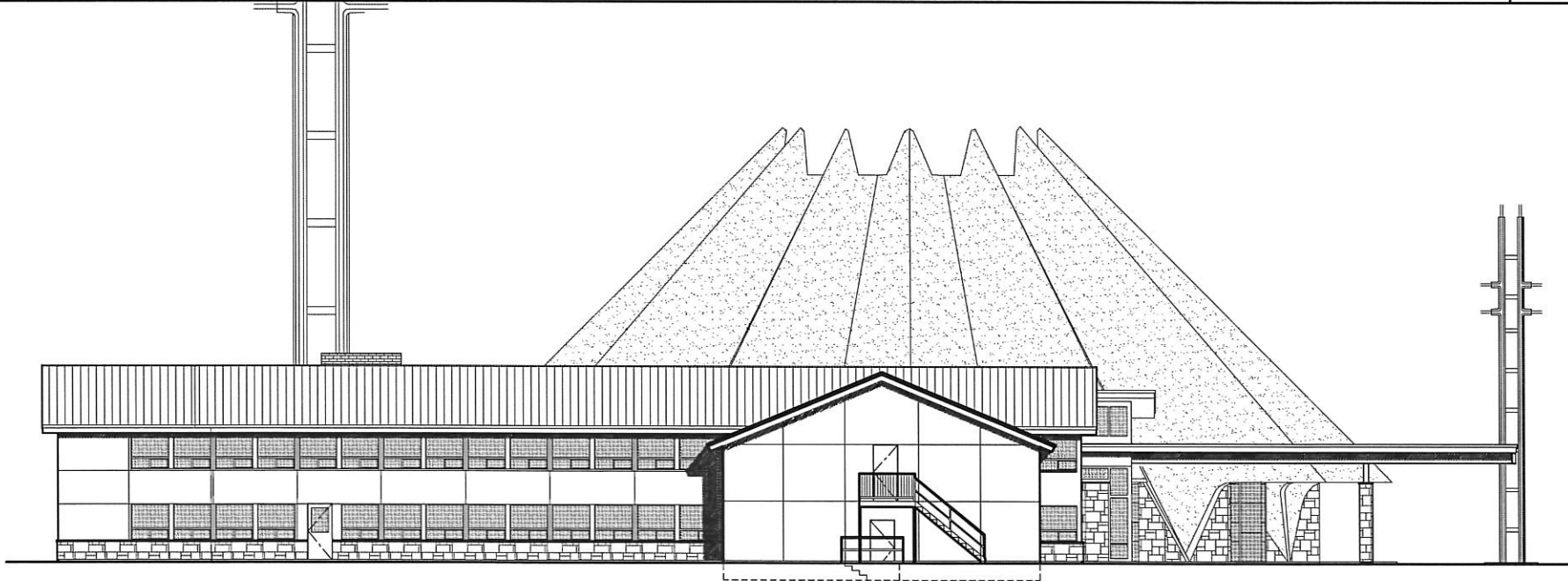
ENLARGED STEVENS ENTRY ELEVATION

3/16" = 1'-0"



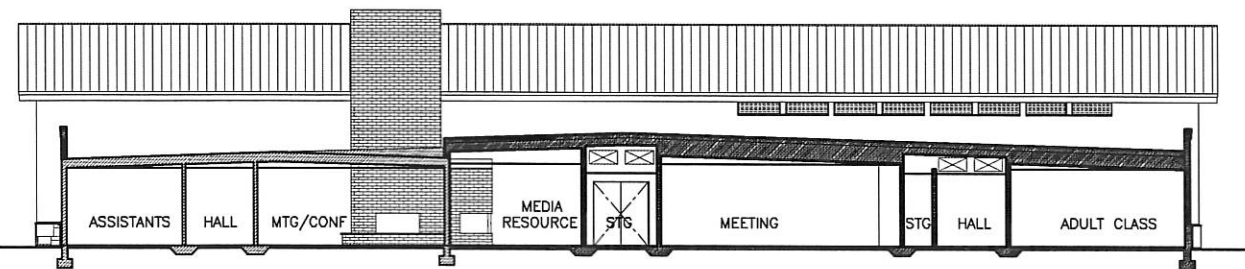
ENLARGED KIMBALL ENTRY ELEVATION

3/16" = 1'-0"



SOUTH ELEVATION

3/32" = 1'-0"



SECTION A

3/32" = 1'-0"



8697 Gage Boulevard
Kennewick, WA 99336

P: 509.735.1589

F: 509.783.5075

www.meierinc.com

NO.	REVISIONS	DATE	DRWN	CHKD	DESIGN	APPD

APPROVAL	
DRAWN	
DESIGN	
CHECKED	
APPROVED	

NOT FOR CONSTRUCTION
 RICHLAND LUTHERN CHURCH
 FACILITIES STRATEGIC PLAN
 RICHLAND, WA
ELEVATIONS & SECTION

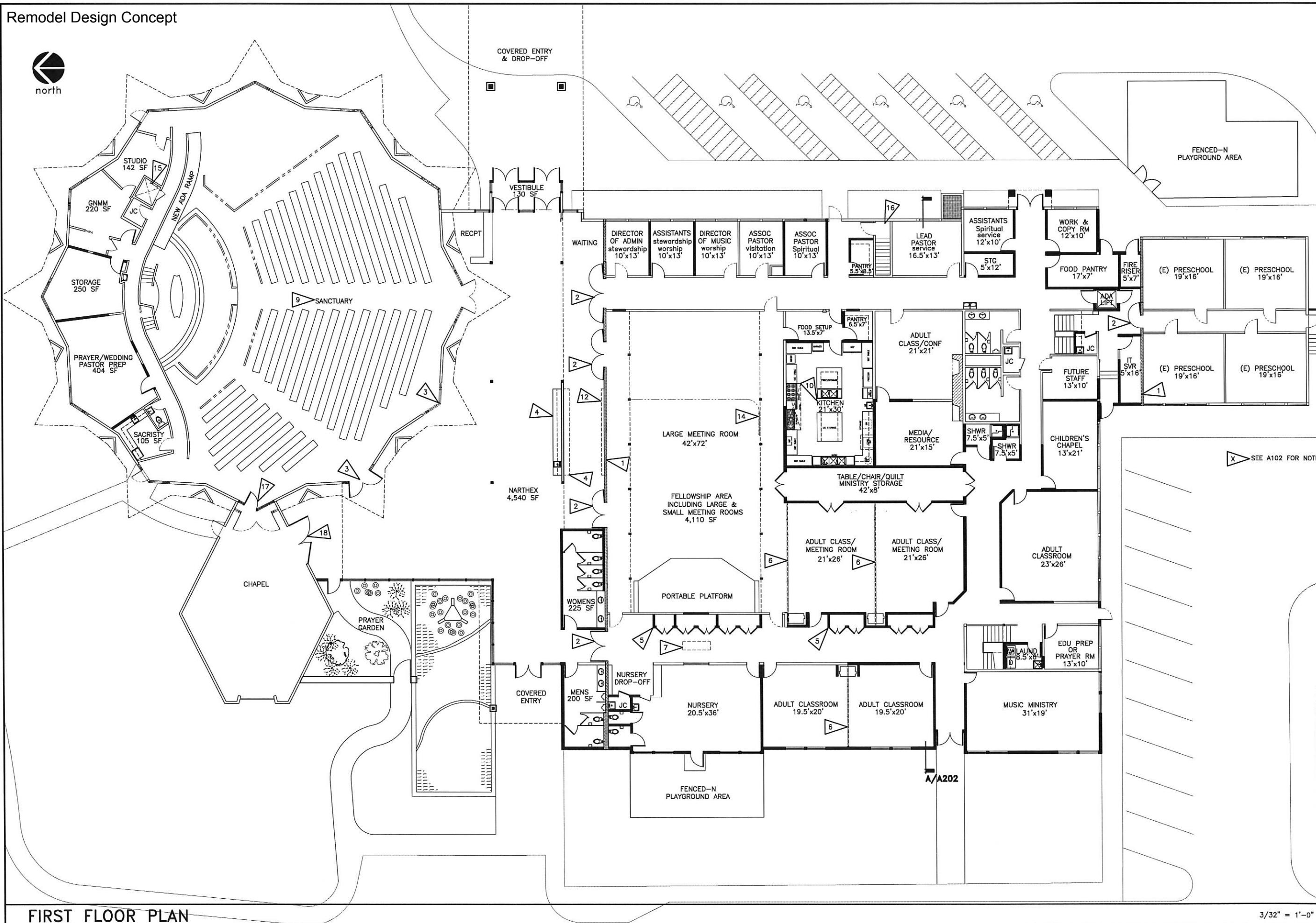
DWG. No.
A202

SCALE:

CADFILE:

JOB No.	REV.
7448	△

Remodel Design Concept



Meier
ARCHITECTURE-ENGINEERING

8697 Gage Boulevard
Kennewick, WA 99336

P: 509.735.1589
F: 509.783.5075

www.meierinc.com

APPD	DESIGN	APPD
DRWN	CHGD	APPD
DATE	REVISIONS	No.

APPROVAL	
DRAWN	
DESIGN	
CHECKED	
APPROVED	

NOT FOR CONSTRUCTION

RICHLAND LUTHERN CHURCH
FACILITIES STRATEGIC PLAN
RICHLAND, WA

1ST FLOOR PLAN

DWG. No.
A101

SCALE:
CADFILE:

JOB No.
7448

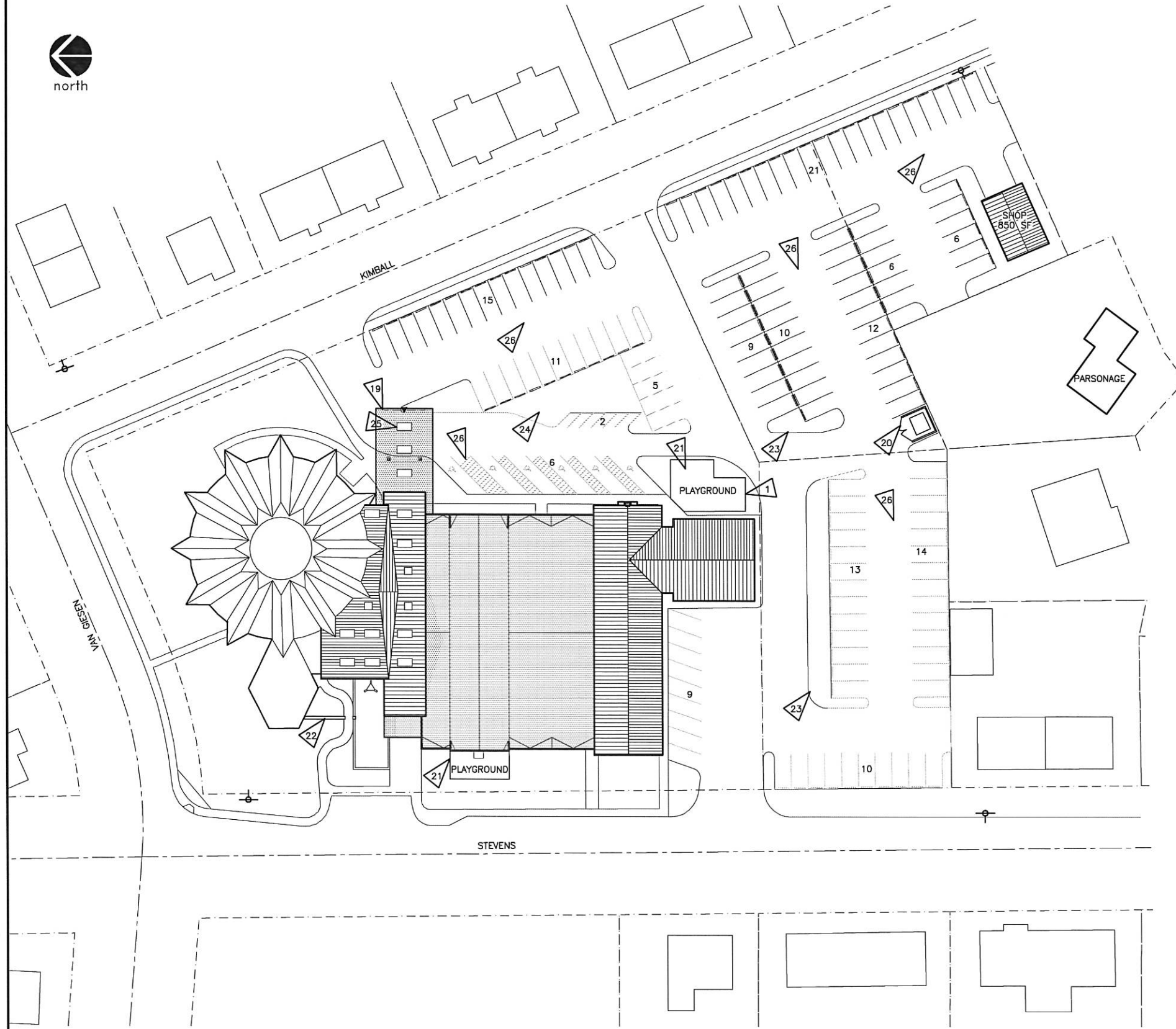
REV.
▲

I:\PROJECTS\1400\1448 RLC Facilities Strategic Plan\DWG\144800XA01-ed.dwg - May 05, 2015 - 10:06:45 am - Ed Luebber

FIRST FLOOR PLAN

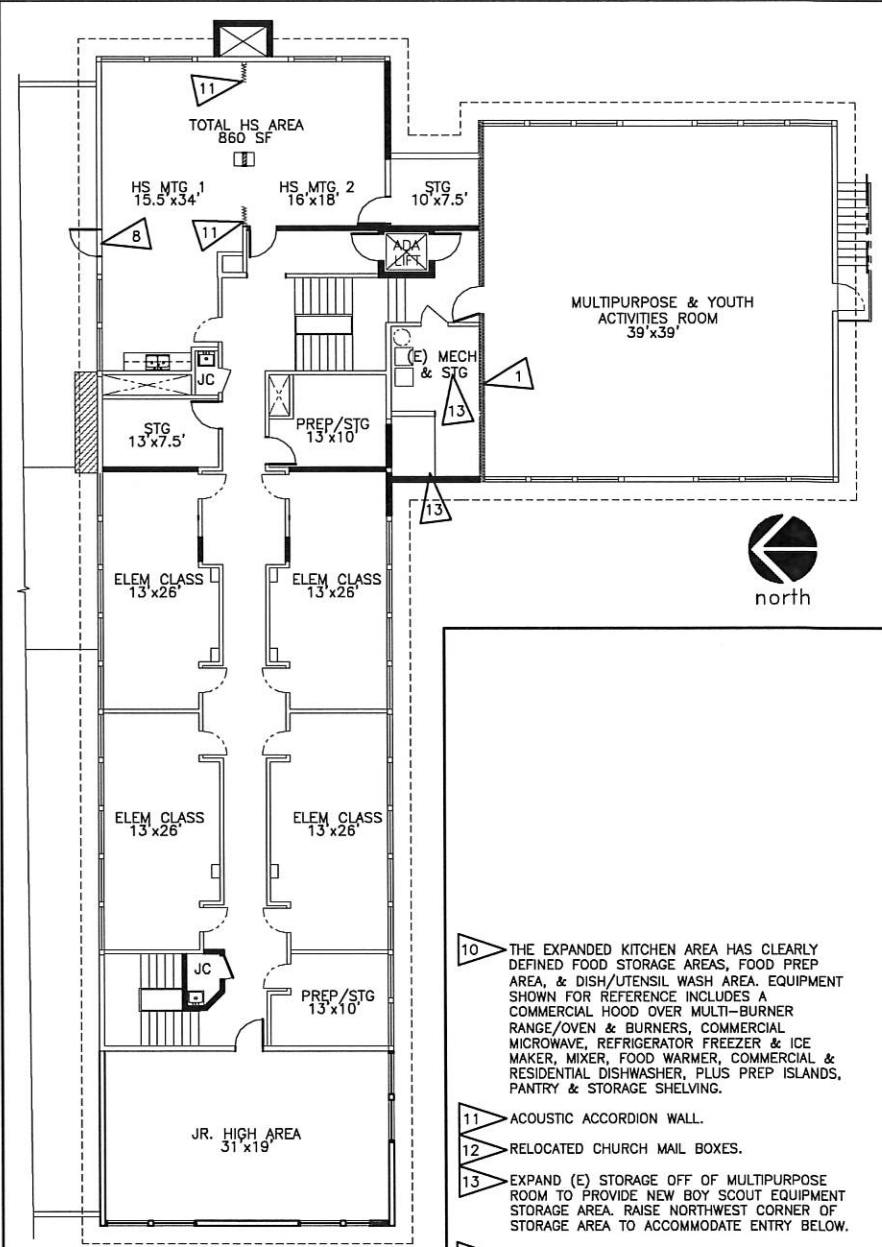
3/32" = 1'-0"

Remodel Design Concept



SITE PLAN

1/32" = 1'-0"



2ND FL PL 3/32" = 1'-0"

- 1 2-HOUR FIRE WALL.
- 2 90-MIN FIRE DOORS W/MAGNETIC HOLD-OPENS.
- 3 REMOVE (E) STAIN-GLASS WINDOW & INSTALL DOUBLE DOORS INTO SANCTUARY. RELOCATE (E) STAIN-GLASS WINDOW TO FORMER CRY ROOM AREA, REPLACING THE CLEAR GLASS WINDOWS.
- 4 7' HIGH WALL WITH COFFEE & REFRESHMENT BAR ON NORTH SIDE & COAT RACKS ON SOUTH.
- 5 LOCKABLE MICRO-MINISTRY STORAGE CLOSETS.
- 6 ACOUSTIC FOLDING PARTITION.
- 7 NEW HVAC EQUIPMENT LOCATED IN ATTIC SPACE ABOVE NURSERY & ACCESSED FROM HALLWAY BY LOCKABLE PULL-DOWN STAIRS.
- 8 PROVIDE ROOF ACCESS DOOR FROM HIGH SCHOOL ROOM.
- 9 SANCTUARY SEATING AREA WILL HAVE MINIMAL IMPROVEMENTS TO INCLUDE SAFER CHOIR AREA ACCESS, RAMP TO LECTERN, MORE CLEARLY IDENTIFIED EXITS, IMPROVED LIGHTING, HVAC, ACOUSTICS, COMMUNICATIONS SYSTEMS, & FLEXIBILITY TO ACCOMMODATE VARIOUS FORMS OF WORSHIP WHILE MINIMIZING IMPACT TO THE EXISTING SPACE.
- 10 THE EXPANDED KITCHEN AREA HAS CLEARLY DEFINED FOOD STORAGE AREAS, FOOD PREP AREA, & DISH/UTENSIL WASH AREA. EQUIPMENT SHOWN FOR REFERENCE INCLUDES A COMMERCIAL HOOD OVER MULTI-BURNER RANGE/OVEN & BURNERS, COMMERCIAL MICROWAVE, REFRIGERATOR FREEZER & ICE MAKER, MIXER, FOOD WARMER, COMMERCIAL & RESIDENTIAL DISHWASHER, PLUS PREP ISLANDS, PANTRY & STORAGE SHELVING.
- 11 ACOUSTIC ACCORDION WALL.
- 12 RELOCATED CHURCH MAIL BOXES.
- 13 EXPAND (E) STORAGE OFF OF MULTIPURPOSE ROOM TO PROVIDE NEW BOY SCOUT EQUIPMENT STORAGE AREA. RAISE NORTHWEST CORNER OF STORAGE AREA TO ACCOMMODATE ENTRY BELOW.
- 14 REMOVE EXISTING ACCORDION PARTITION
- 15 REPLACE EXISTING WOOD LADDER WITH OSHA COMPLIANT METAL LADDER. REVISE GRATING SUPPORT STRUCTURE & OPENING TO 3' SQUARE.
- 16 EXPAND MECH/ELEC BASEMENT TO EXTEND WEST INTO COURTYARD ADDITION TO INCLUDE ADDED MECH/ELEC EQUIPMENT REQUIRED FOR REMODEL & EXPANSION.
- 17 INSTALL A NEW GLASS PARTITION AND DOOR INTO THE CHAPEL WITH GASKETING FOR ACOUSTIC SEPARATION. (E) DECORATIVE WOOD DOORS INTO CHAPEL WILL REMAIN IN PLACE.
- 18 REUSE (E) WIDE, CARVED WOOD NARTHEX DOORS AS ENTRY DOORS INTO THE CHAPEL FROM THE NARTHEX.
- 19 NEW COVERED DROP-OFF CANOPY, WITH 14' MINIMUM HEADROOM CLEARANCE.
- 20 TRASH ENCLOSURE
- 21 SECURE PLAYGROUND AREAS
- 22 PRAYER GARDEN
- 23 LANDSCAPE ISLANDS AS REQUIRED BY CITY.
- 24 MAINTAIN ISLAND WITH EXISTING TRANSFORMER.
- 25 SKYLIGHTS, TYPICAL AT COVERED DROP-OFF & IN NARTHEX.
- 26 REMOVE MOST CHURCH OWNED STRUCTURES; REGRADE FOR POSITIVE DRAINAGE BUT SAFE PEDESTRIAN SLOPES; RESTRIPE FOR 149 PARKING STALLS, INCLUDE CITY REQUIRED HANDICAP ACCESSIBLE & MOTORCYCLE STALLS.

FLAG NOTES

Meier
ARCHITECTURE • ENGINEERING
8697 CAGE BOULEVARD
KENNEWICK, WA 99336
P: 509.735.1589
F: 509.783.5075
www.meierinc.com

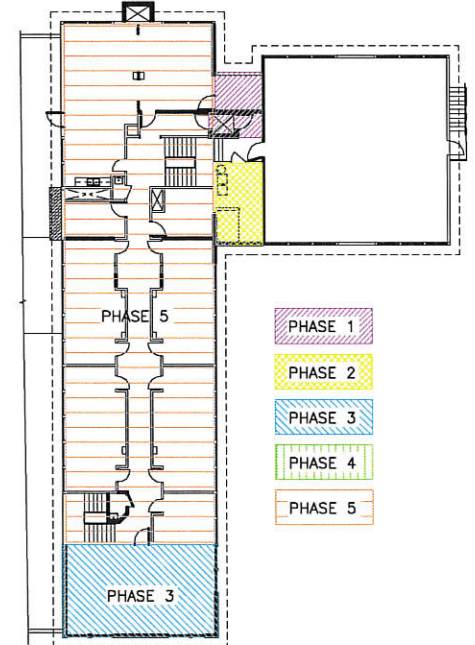
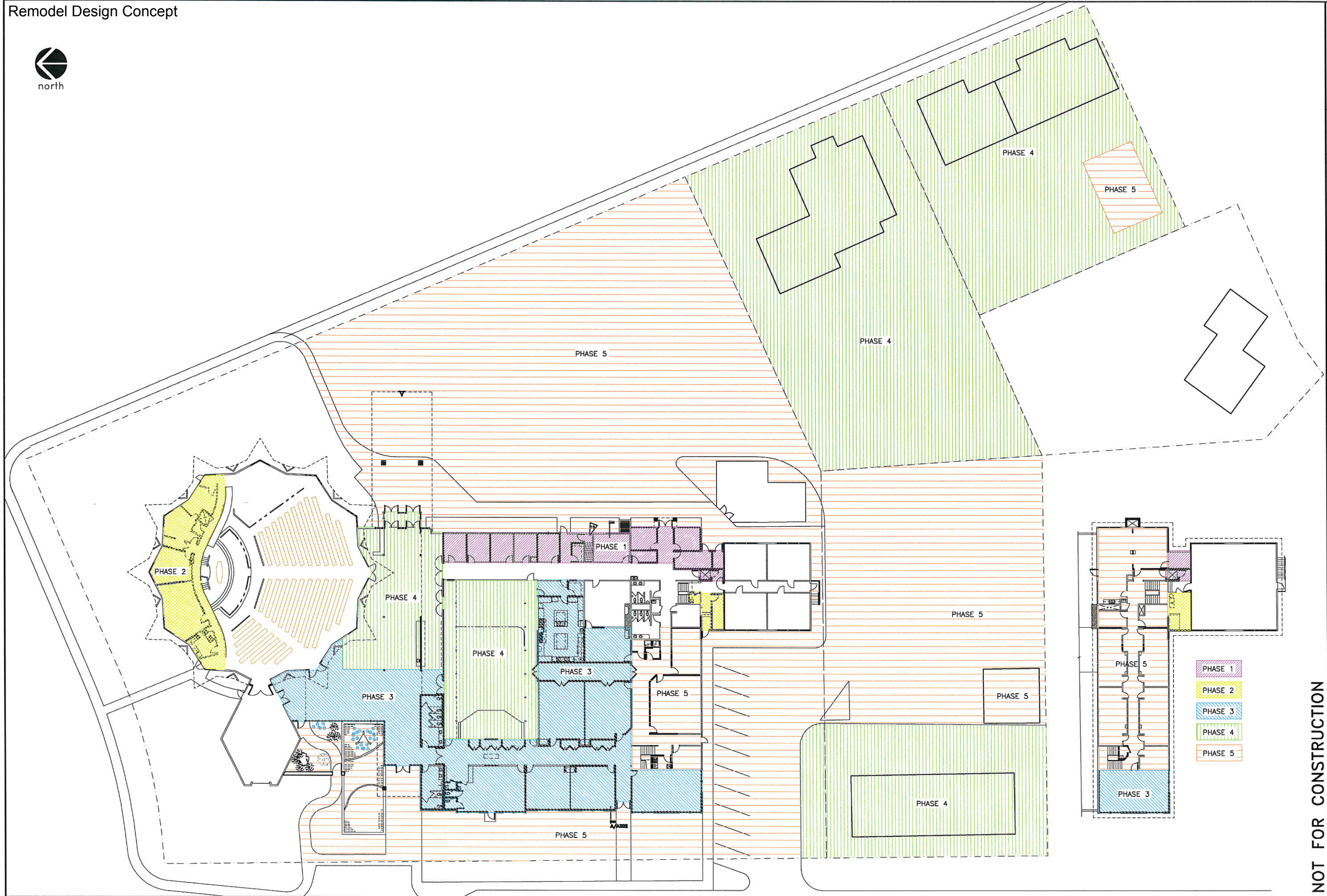
DATE	REVISED	NO.	BY	CHKD	DESIGN	APPD

APPROVAL	
DRAWN	
DESIGN	
CHECKED	
APPROVED	

NOT FOR CONSTRUCTION
 RICHLAND LUTHERAN CHURCH
 FACILITIES STRATEGIC PLAN
 RICHLAND, WA
 2ND FLOOR & SITE PLANS

DWG. No.
A102
SCALE:
CADFILE:
JOB No. 7448
REV.

I:\PROJECTS\74007448 RLC Facilities Strategic Plan\DWG\744800X\A01-red.dwg - Apr 20, 2015 1:30:19 pm - Ed Luebben



- PHASE 1
- PHASE 2
- PHASE 3
- PHASE 4
- PHASE 5

No.	REVISIONS	DATE	DRWN	CHKD	DESIGN	APPD

APPROVAL	
DRAWN	
DESIGN	
CHECKED	
APPROVED	

RICHLAND LUTHERAN CHURCH
FACILITIES STRATEGIC PLAN
 RICHLAND, WA
PHASED CONSTRUCTION PLAN

DWG. No.
A103

SCALE:
 CADFILE:

JOB No. 7448
 REV.

I:\PROJECTS\74007\448 RLC Facilities Strategic Plan\DWG\744800X01-ed.dwg - Apr 20, 2015 11:03:46 am - Ed Luebben

FIRST FLOOR PLAN

NOT FOR CONSTRUCTION

NTS