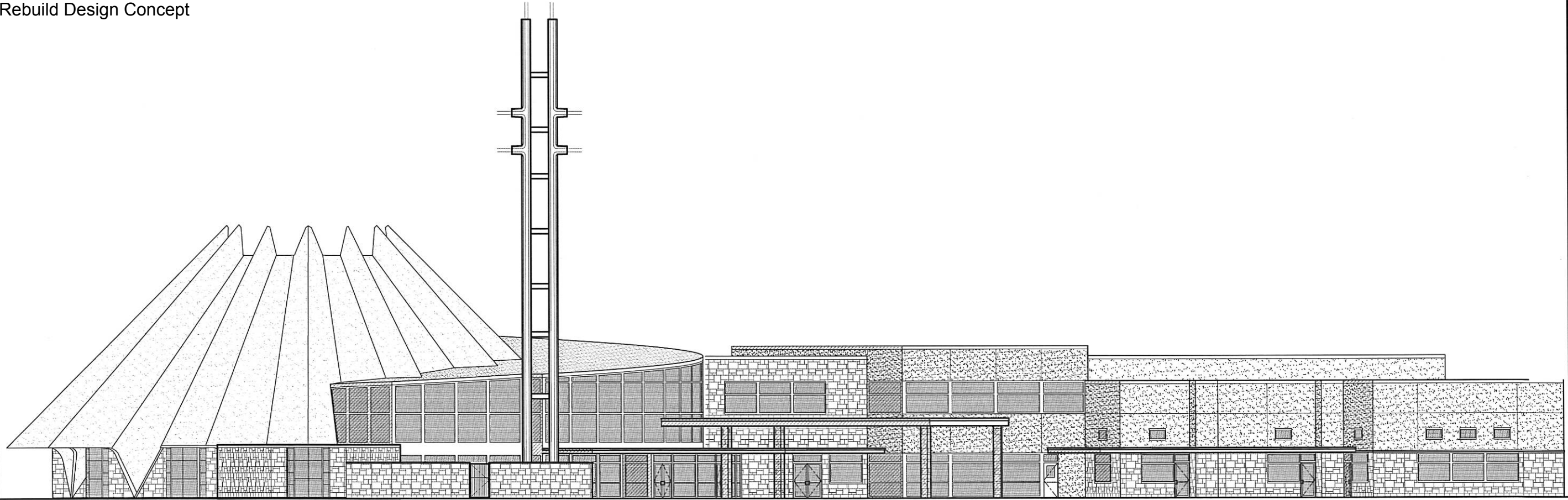


Rebuild Design Concept

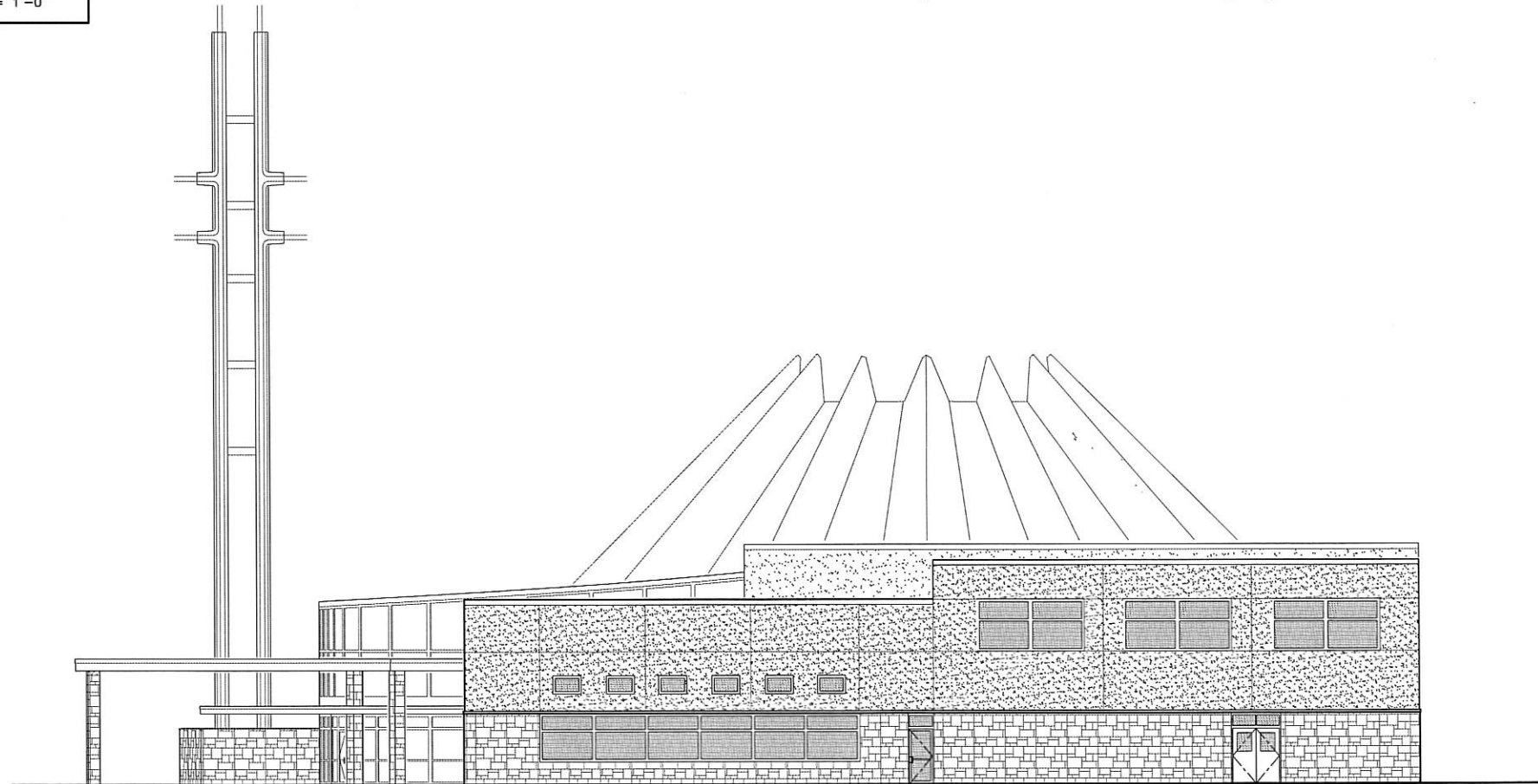


8697 Gage Boulevard
 Kennewick, WA 99336
 P: 509.735.1589
 F: 509.783.5075
 www.meierinc.com



STEVENS (WEST) ELEVATION

3/32" = 1'-0"



SOUTH ELEVATION

3/32" = 1'-0"

REVISIONS	DATE	DRWN	CHKD	DESIGN	APPD
No.					

APPROVAL	
DRAWN	
DESIGN	
CHECKED	
APPROVED	

NOT FOR CONSTRUCTION

RICHLAND LUTHERN CHURCH
 FACILITIES STRATEGIC PLAN
 RICHLAND, WA

WEST & SOUTH ELEVATIONS

DWG. No.
A201

JOB No.	REV.
7448	△

I:\PROJECTS\74007448 RLC Facilities Strategic Plan\DWG\NEW CONSTRUCTION\SCHEM\744800XAO+NEW CONST.dwg - Jun 10, 2016 12:31:20 pm - Ed Luebben

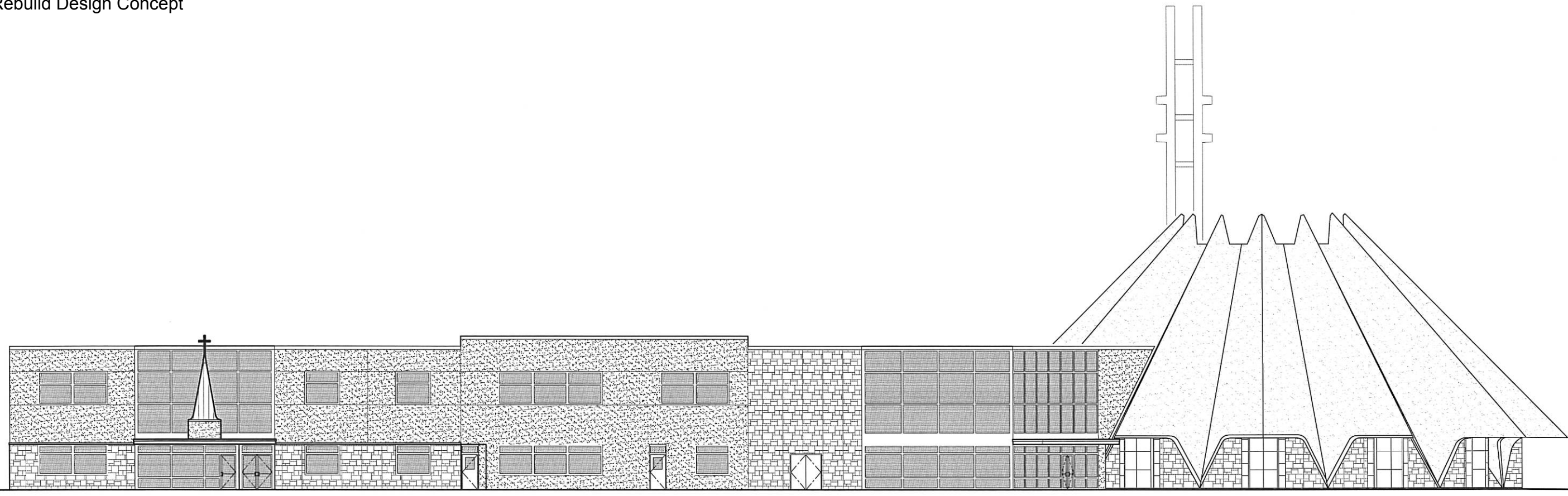
Rebuild Design Concept

Meier
ARCHITECTURE + ENGINEERING

8697 Gage Boulevard
Kennewick, WA 99336

P: 509.735.1588
F: 509.783.5075

www.meierinc.com



REVISIONS	DATE	DRWN	CHKD	DESIGN	APPD
No.					

KIMBALL (EAST) ELEVATION

3/32" = 1'-0"

APPROVAL	
DRAWN	
DESIGN	
CHECKED	
APPROVED	

NOT FOR CONSTRUCTION

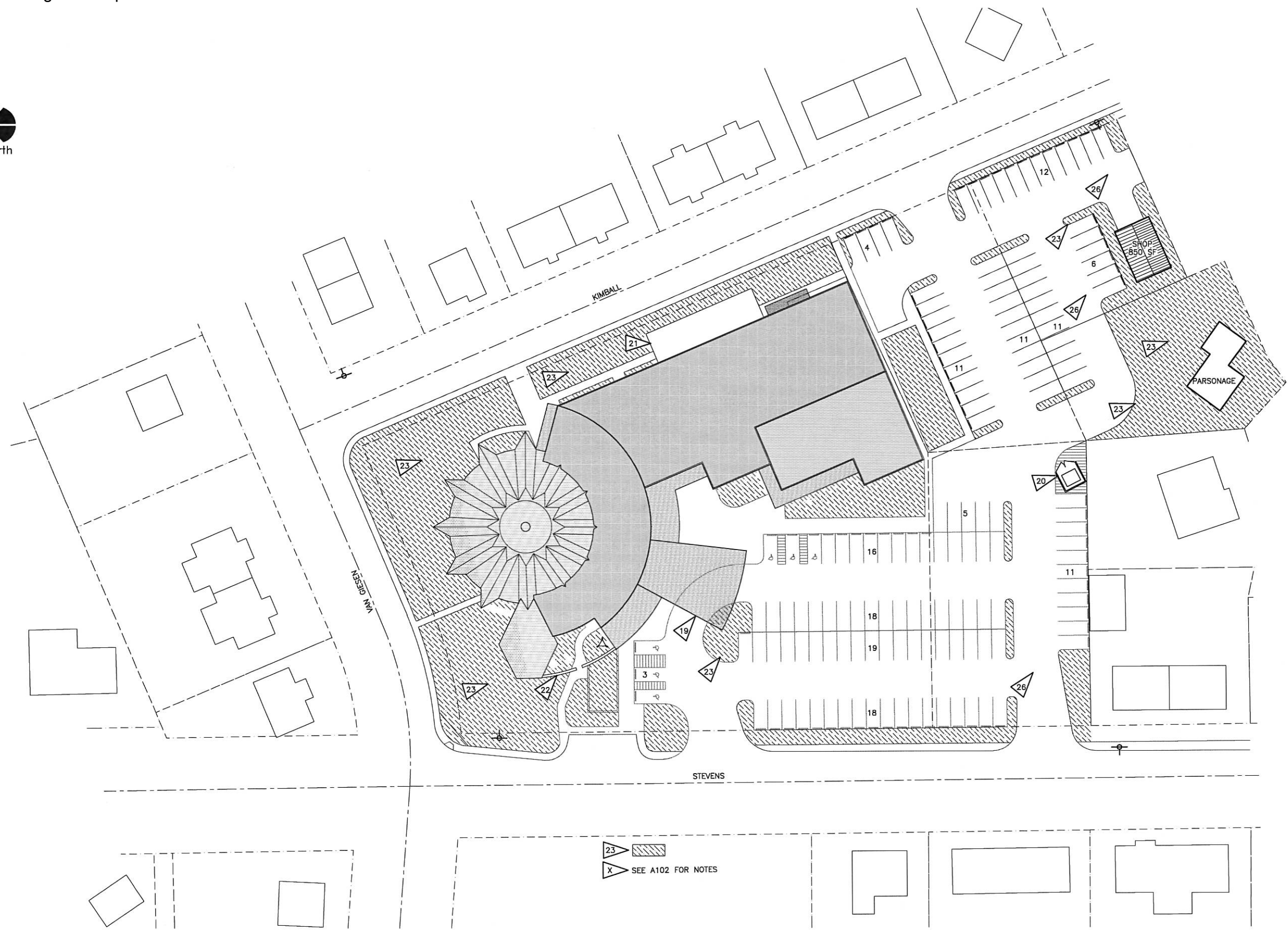
RICHLAND LUTHERN CHURCH
FACILITIES STRATEGIC PLAN
RICHLAND, WA
EAST ELEVATIONS

DWG. No.
A202

SCALE:
CADFILE:
JOB No.
7448

REV.
△

I:\PROJECTS\74007448 RLC Facilities Strategic Plan\DWG\NEW CONSTRUCTION\SCHEM\744800XA01-NEW CONST.dwg - Jun 22, 2016 7:53:36 am - Ed Luebben



Meier
ARCHITECTURE • ENGINEERING

8697 Gage Boulevard
Kennewick, WA 99336

P: 509.735.1589
F: 509.783.5075

www.meierinc.com

REVISIONS	DATE	DRWN	CHKD	DESIGN	APPD
No.					

APPROVAL

DRAWN	
DESIGN	
CHECKED	
APPROVED	

NOT FOR CONSTRUCTION

RICHLAND LUTHERN CHURCH
FACILITIES STRATEGIC PLAN
RICHLAND, WA

SITE PLAN

DWG. No.
A100

SCALE:
CADFILE:

JOB No.
7448

REV.
△

I:\PROJECTS\74007448 RLC Facilities Strategic Plan\DWG\NEW CONSTRUCTION SCHEMATIC\44800X01-NEW CONST.dwg - Jun 24, 2015 11:14:11 am - Janae Day



NO.	REVISIONS	DATE	DRWN	CHKD	DESIGN	APPD

APPROVAL	
DRAWN	
DESIGN	
CHECKED	
APPROVED	

NOT FOR CONSTRUCTION
 RICHLAND LUTHERN CHURCH
 FACILITIES STRATEGIC PLAN
 RICHLAND, WA
1ST FLOOR PLAN

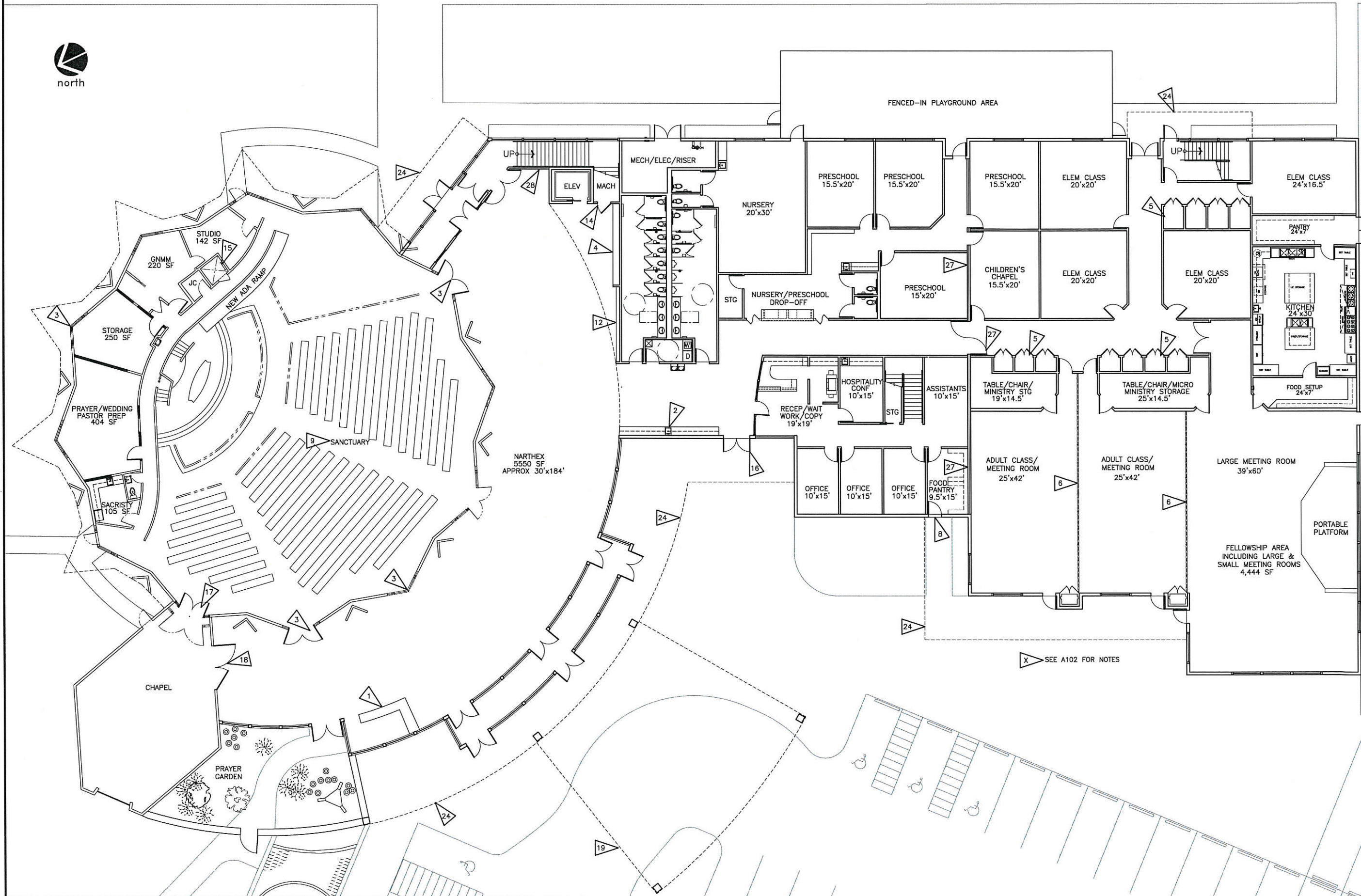
DWG. No.
A101

SCALE:
 CADFILE:

JOB No.
 7448

REV.

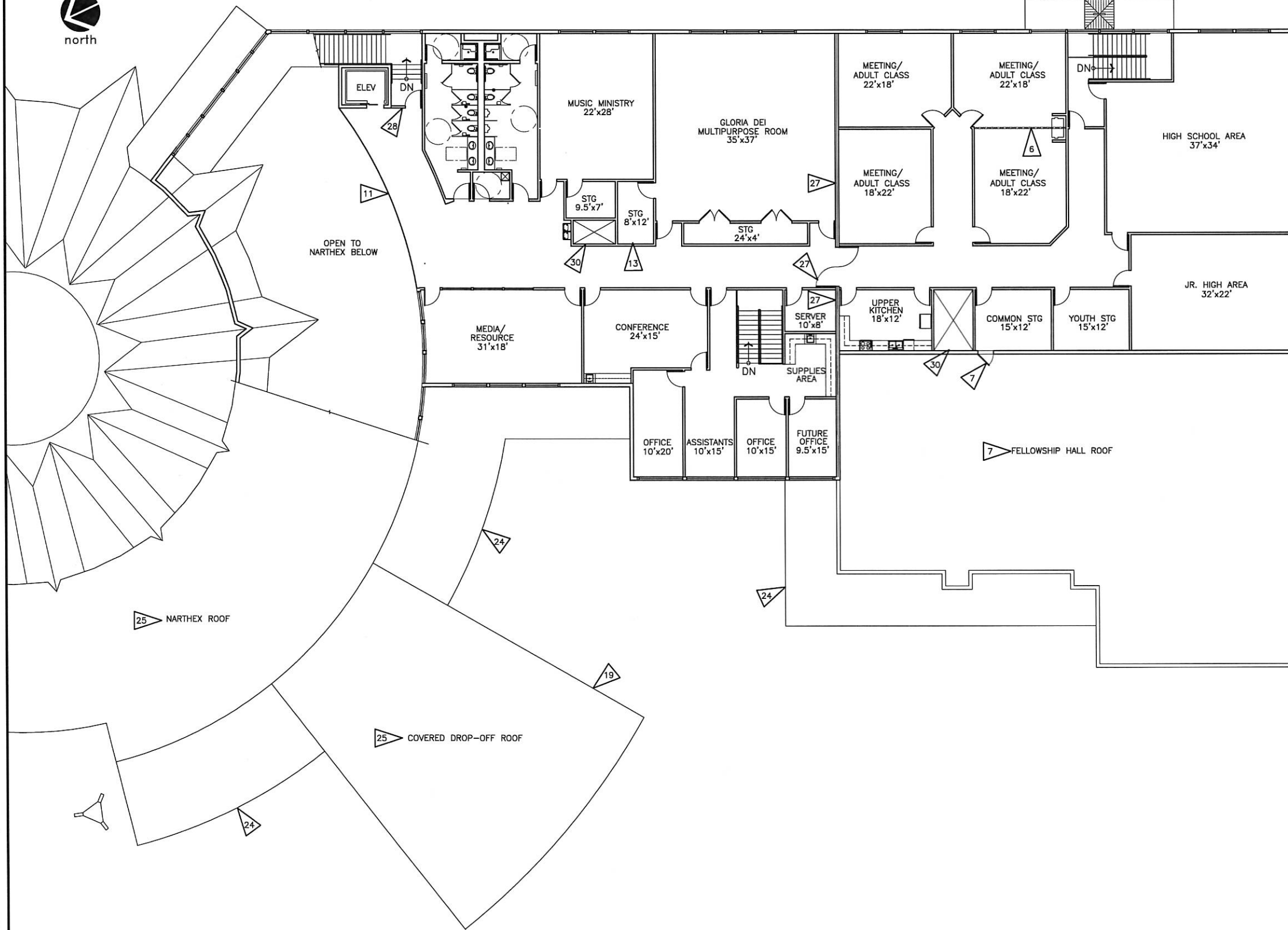
I:\PROJECTS\174007448 RLC Facilities Strategic Plan\DWG\NEW CONSTRUCTION SCHEM\174007448\1-NEW CONST.dwg - Jun 24, 2015 11:14:36 am - Jmared Day



FIRST FLOOR PLAN

3/32" = 1'-0"

Rebuild Design Concept



- 1 INFORMATION/WELCOME CENTER.
- 2 COFFEE & REFRESHMENT CENTER.
- 3 REMOVE (E) STAIN-GLASS WINDOWS & INSTALL DOUBLE DOORS INTO SANCTUARY. RELOCATE (E) STAIN-GLASS WINDOWS TO FORMER CRY ROOM AREA, & NEW STORAGE ROOM, REPLACING THE CLEAR GLASS WINDOWS.
- 4 COAT RACKS.
- 5 LOCKABLE MICRO-MINISTRY OR SUNDAY SCHOOL STORAGE CLOSETS.
- 6 ACOUSTIC FOLDING PARTITION.
- 7 NEW HVAC EQUIPMENT LOCATED ON ROOF TOP, ACCESSED BY DOOR FROM SOUTH FIRE ESCAPE STAIRWAY.
- 8 PROVIDE DUTCH STYLE DOOR WITH COUNTER AT FOOD PANTRY TO HELP WITH FOOD DISTRIBUTION ACTIVITIES.
- 9 SANCTUARY SEATING AREA WILL HAVE MINIMAL IMPROVEMENTS TO INCLUDE SAFER CHOIR AREA ACCESS, RAMP TO LECTERN, MORE CLEARLY IDENTIFIED EXITS, IMPROVED LIGHTING, HVAC, ACOUSTICS, COMMUNICATIONS SYSTEMS, & FLEXIBILITY TO ACCOMMODATE VARIOUS FORMS OF WORSHIP WHILE MINIMIZING IMPACT TO THE EXISTING SPACE.
- 10 THE KITCHEN AREA HAS CLEARLY DEFINED FOOD STORAGE AREAS, FOOD PREP AREA, & DISH/UTENSIL WASH AREA. EQUIPMENT SHOWN FOR REFERENCE INCLUDES A COMMERCIAL HOOD OVER MULTI-BURNER RANGE/OVEN & BURNERS, COMMERCIAL MICROWAVE, REFRIGERATOR FREEZER & ICE MAKER, MIXER, FOOD WARMER, COMMERCIAL & RESIDENTIAL DISHWASHER, PLUS PREP ISLANDS, PANTRY & STORAGE SHELVING.
- 11 RAILING OVERLOOKING NARTHEX.
- 12 RELOCATED CHURCH MAIL BOXES.
- 13 PROVIDE STORAGE NEAR THE GLORIA DEI MULTIPURPOSE ROOM FOR BOY SCOUT EQUIPMENT.
- 14 ELEVATOR MACHINE ROOM.
- 15 REPLACE EXISTING WOOD LADDER WITH OSHA COMPLIANT METAL LADDER. REVISE GRATING SUPPORT STRUCTURE & OPENING TO 3' SQUARE.
- 16 CHURCH OFFICE ENTRY DOOR.
- 17 INSTALL A NEW GLASS PARTITION AND DOOR INTO THE CHAPEL WITH GASKETING FOR ACOUSTIC SEPARATION. (E) DECORATIVE WOOD DOORS INTO CHAPEL WILL REMAIN IN PLACE.
- 18 REUSE (E) WIDE, CARVED WOOD NARTHEX DOORS AS ENTRY DOORS INTO THE CHAPEL FROM THE NARTHEX.
- 19 NEW COVERED DROP-OFF CANOPY, WITH 14' MINIMUM HEADROOM CLEARANCE.
- 20 TRASH ENCLOSURE
- 21 SECURE PLAYGROUND AREA
- 22 PRAYER GARDEN
- 23 NEW & EXISTING LAWN & LANDSCAPE AREAS
- 24 CANOPIES OVERHEAD.
- 25 SKYLIGHTS, TYPICAL AT COVERED DROP-OFF & IN NARTHEX.
- 26 REMOVE MOST CHURCH OWNED STRUCTURES; REGRADE FOR POSITIVE DRAINAGE BUT SAFE PEDESTRIAN SLOPES; RESTRIPE FOR 161 PARKING STALLS. INCLUDE CITY REQUIRED HANDICAP ACCESSIBLE & MOTORCYCLE STALLS.
- 27 TWO-HOUR FIRE RESISTANCE RATED WALL. DOORS WITHIN THIS WALL ARE REQUIRED TO HAVE A 90 MINUTE FIRE RESISTANCE RATING. HALLWAY DOORS SHALL BE KEPT OPEN WITH MAGNETIC HOLD OPEN DEVICES, WHICH ENABLE THESE DOORS TO CLOSE WHEN TRIGGERED BY THE FIRE ALARM SYSTEM.
- 28 ONE-HOUR FIRE RESISTANCE RATED WALLS AND DOORS AT EXIT STAIRWAYS. PROVIDE MAGNETIC HOLD-OPENS FOR STAIRWAY DOORS INTO THE NARTHEX.
- 29 ORIGINAL CHURCH STEEPLE BUILT ON TOP OF KIMBALL STREET CLASSROOM ENTRY.
- 30 MECHANICAL CHASE SPACE TO ALLOW DUCTWORK FROM ROOF TOP HVAC UNITS DOWN TO FIRST FLOOR.



8697 Gage Boulevard
 Kennewick, WA 99336
 P: 509.735.1589
 F: 509.783.5075
 www.meierinc.com

APPD	DESIGN	CHKD	DRWN	DATE	REVISIONS	No.

APPROVAL	
DRAWN	
DESIGN	
CHECKED	
APPROVED	

NOT FOR CONSTRUCTION
 RICHLAND LUTHER CHURCH
FACILITIES STRATEGIC PLAN
 RICHLAND, WA
2ND FLOOR & SITE PLANS

DWG. No.
A102

SCALE:	JOB No.	REV.
CADFILE:	7448	

I:\PROJECTS\174007448 RLC Facilities Strategic Plan\DWG\NEW CONSTRUCTION SCHEMATIC\4800X2401-NEW CONST.dwg - Jun 24, 2015 11:14:57 am - Janae Day

2ND FLOOR PLAN

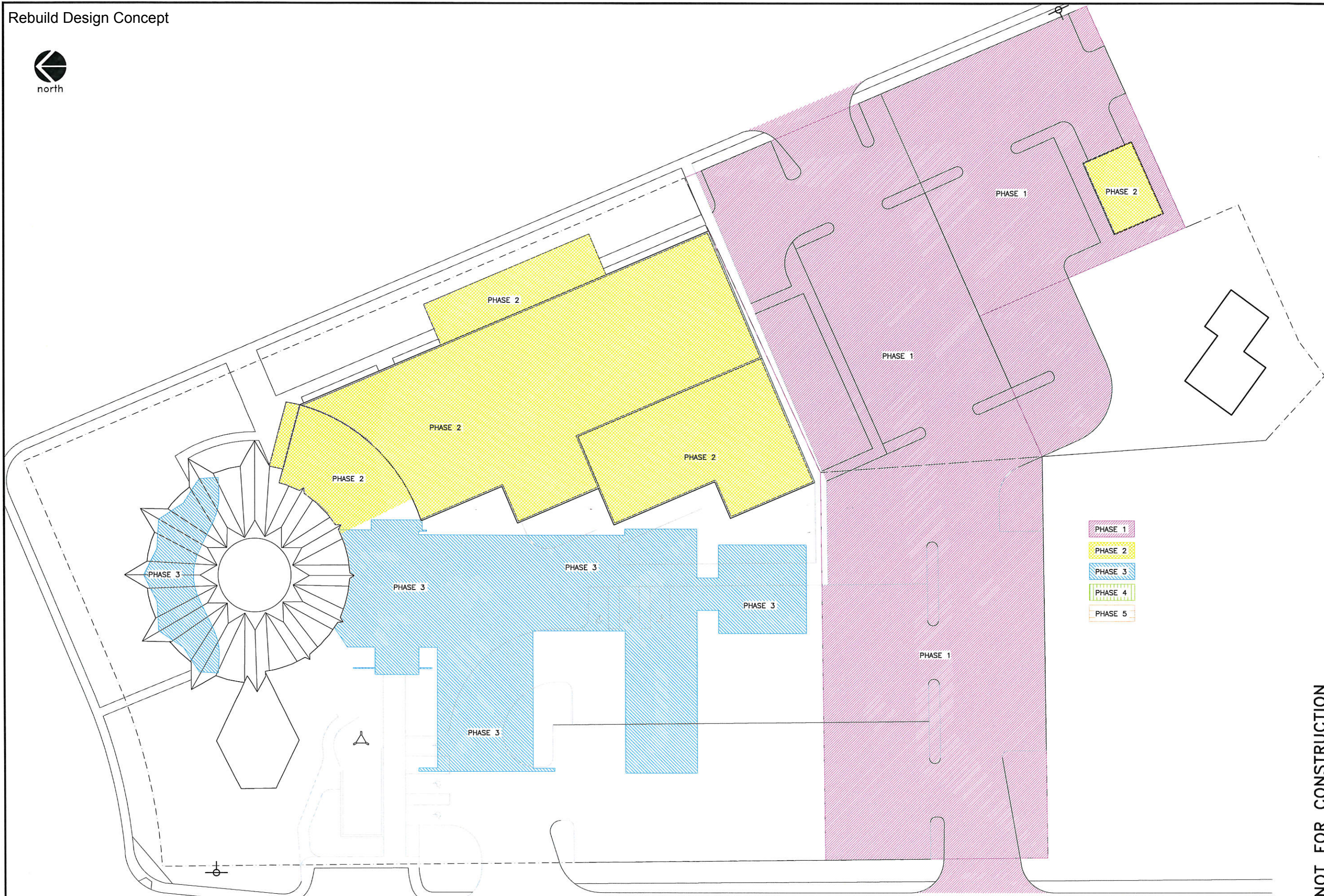
3/32" = 1'-0"

FLAG NOTES



8697 Gage Boulevard
 Kennewick, WA 99336
 P: 509.735.1589
 F: 509.783.5075
 www.meierinc.com

PROJECTS74007448 RLC Facilities Strategic Plan\DWG\NEW CONSTRUCTION SCHEME\744800\A01-NEW CONST.dwg - Jun 24, 2015 11:15:23 am - Jareae Day



No.	REVISIONS	DATE	DRWN	CHKD	DESIGN	APPD

APPROVAL	
DRAWN	
DESIGN	
CHECKED	
APPROVED	

NOT FOR CONSTRUCTION

RICHLAND LUTHERN CHURCH
 FACILITIES STRATEGIC PLAN
 RICHLAND, WA
PHASED CONSTRUCTION PLAN

DWG. No.
A103

SCALE:
 CADFILE:

JOB No.
 7448

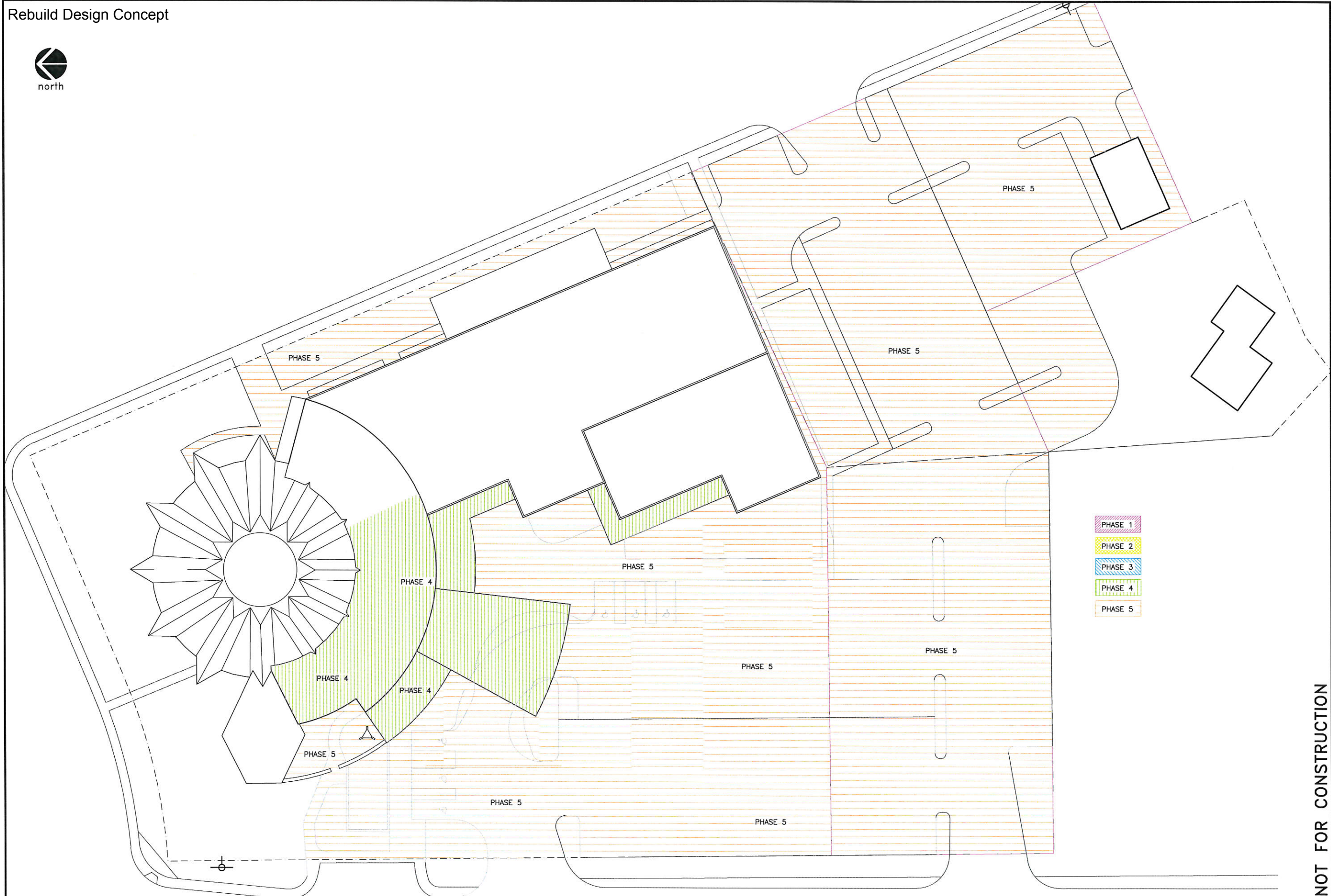
REV.

PHASES 1, 2, AND 3

NTS



I:\PROJECTS\1740017448 RLC Facilities Strategic Plan\DWG\NEW CONSTRUCTION SCHEMATIC\401-NEW CONST.dwg - Jun 24, 2015 11:15:58 am - Janine Day



No.	REVISIONS	DATE	DRWN	CHKD	DESIGN	APPD

APPROVAL	
DRAWN	
DESIGN	
CHECKED	
APPROVED	

NOT FOR CONSTRUCTION

RICHLAND LUTHERN CHURCH
FACILITIES STRATEGIC PLAN
RICHLAND, WA

PHASED CONSTRUCTION PLAN

DWG. No.
A104

SCALE:
CADFILE:

JOB No.
7448

REV.
7448